

### N062A Bundbühse mit Alukäfig / Douille avec col, cage en aluminium

**Bühse / douille:** Stahl / acier 100 Cr6  
**Härte / trempe:** 60 - 64HRC  
**Härtung / trempage:** einsatzgehärtet / cémenté  
**Ausführung / exécution:** geläpft / rectifié  
**Käfig / cage:** Aluminium  
**Kugeln / billes:** Stahl / acier 100 Cr6

#### N062A

	19/20	24/25	30/32	38/40	48/50	63	80
d1	19/20	24/25	30/32	38/40	48/50	63	80
d2	25/26	30/31	38/40	46/48	56/58	71	92
d3	32	40	48	58	70	85	105
d4	40	48	56	66	80	95	118
d5	39	46	53	63	77	92	115
d6	52	60	67	77	91	106	129
d7	67,9	75,8	82,7	92,7	106,6	121,5	144,4
b	22,3	24,3	26	28,5	32	35,8	41,5
b1	32	35,4	38,5	42,8	48,8	55,3	65,3
Gew. / fil.	M6	M6	M8	M8	M8	M8	M8
L	71	95	120	120	140	160	160
L1	59	79	93	108	127	150	150
L2	23	23	30	37	47	60	60
c	12	12	13	13	13	13	13

#### N063A

	19/20	24/25	30/32	38/40	48/50	63	80
d1	19/20	24/25	30/32	38/40	48/50	63	80
L		95	120	140	160		
L1		80	93	110	131		
L2		30	37	47	60		

#### N064A

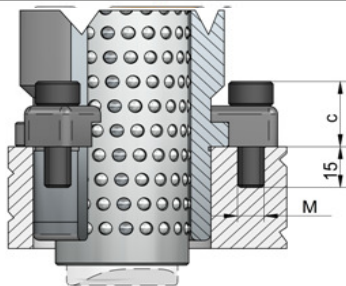
	19/20	24/25	30/32	38/40	48/50	63	80
d1	19/20	24/25	30/32	38/40	48/50	63	80
L	56	71	95	105	120	140	140
L1	43	59	75	82	97	116	120
L2	23	23	30	37	47	60	60

#### N065A

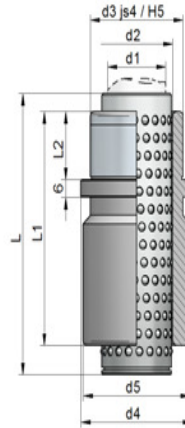
	19/20	24/25	30/32	38/40	48/50	63	80
d1	19/20	24/25	30/32	38/40	48/50	63	80
L	45	45	56	63	80	95	120
L1	35	35	42	52	65	80	80
L2	23	23	30	37	47	60	60

#### N066A

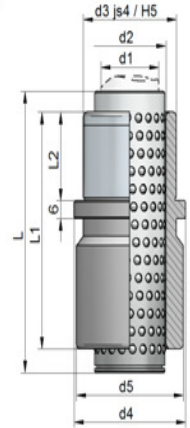
	19/20	24/25	30/32	38/40	48/50	63	80
d1	19/20	24/25	30/32	38/40	48/50	63	80
L		71	80	95	120		
L1		55	69	79	96		
L2		30	37	47	60		



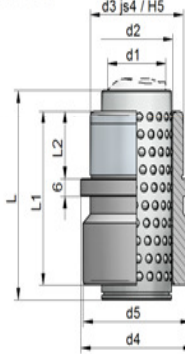
#### N62A



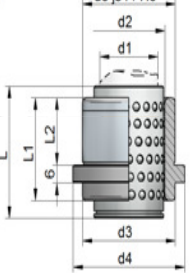
#### N63A



#### N64A



#### N65A



#### N66A

